



PROFESSIONAL  
HAIRSYSTEMS FOR MEN

**manager<sup>®</sup>top**  
Hair | Systems

## **Manager Top Hairsystems - Innovative Hairsystems for Men.**

A wide selection of styles and colours are delivered immediately ex stock as well as custom-made to meet your exact requirements. There is no limit for your creativity. Manager Top Hairsystems are only available in specialised shops.



- **IMMEDIATE DELIVERY**  
FROM CLASSIC TOUPEE DESIGN TO LATEST SOFT-MONO-LACE-FRONT
- **SECRET|HAIR®**  
BONDING-HAIRSYSTEMS FOR PERMANENT ATTACHMENT
- **CUSTOM MADE ORDERS**
- **INNOVATIVE SYSTEMS FOR ATTACHMENT**
- **PROFESSIONAL CARE PRODUCTS**
- **ALLROUND SERVICE FOR YOUR CUSTOMERS**



ATE!

# CONTENTS

→	<b>TOUPEES</b>	<b>4-18</b>
	<b>COSMO HAIR</b>	<b>4-5</b>
	<i>100 % HEAT-RESISTANT SYNTHETIC FIBRE</i>	
	MT-Light	5
	<b>MATRIX HAIR</b>	<b>6-7</b>
	<i>HEAT-RESISTANT SYNTHETIC FIBRE WITH 50% HUMAN HAIR</i>	
	Lace-Front MT-2500	7
	MT-2700	7
	<b>SYNTHETIC HAIR</b>	<b>8-11</b>
	<i>SYNTHETIC HAIR FIBRE (MODACRYL)</i>	
	Ready-to-Wear + Lace-Front MT-410	8
	MT-415	8
	MT-510	9
	Transparent PU-Front MT-800	10
	MT-430	11
	MT-450	11
	MT-480	11
	PU-Front MT-300	12
	MT-400	13
	MT-103	13
	<b>HUMAN HAIR</b>	<b>14-15</b>
	<i>INDO HAIR</i>	
	Lace-Front MT-6000	14
	PU-Front MT-120	15
	MT-420	15
→	<b>SECRET HAIR® / HUMAN HAIR</b>	<b>16-19</b>
	<i>BONDING-HAIRSYSTEMS FOR PERMANENT ATTACHMENT</i>	
	Soft-Mono-Net MT-1000	17
	(Welded-Mono) MT-3000	17
	PU-Foil Micro-Skin	18
	Secret-Skin	18
	Active-Skin	19
	Strong-Skin	19
→	<b>MEN'S WIGS</b>	<b>20-25</b>
	<i>SYNTHETIC-HAIR</i>	
	Mono + hand-tied Luca SF	20
	Alison, Alison Large, Alison Super Large	21
	Mono + Wefts Ben SF, Ben Medium SF	21
	Carlos	22
	Wefts Tim, Tim Medium	23
	Full-Mono Felix	23
	<i>HUMAN HAIR</i>	
	Mono + hand-tied James	25
	Full-Mono + PU Mr. Bond	25
→	<b>CUSTOM MADE ORDERS</b>	<b>26-27</b>
→	<b>ATTACHMENT SYSTEMS / HAIR CARE / ACCESSORIES</b>	<b>28-33</b>
→	<b>ORDER FORM FOR CUSTOM MADE ORDERS</b>	<b>34</b>
→	<b>COLOUR GUIDE</b>	<b>35</b>



MT-LIGHT

## COSMO HAIR

**COSMO HAIR** is a newly developed synthetic hair fibre. The fibre is made from polyester and is used without adding human hair. The synthetic fibre is very soft and hair fall is natural. **COSMO HAIR** is the alternative to human hair!

### Characteristics:

1. Maximum heat-resistance is 230 degrees Celsius.
2. 100 % synthetic hair. No human hair is added.
3. COSMO HAIR is thinner than normal synthetic hair and similar to fine European hair.
4. COSMO HAIR is less shiny than normal synthetic hair. It imitates the shine of European hair.
5. The hair is very soft and hair fall is natural. Grip and feel like human hair.
6. Hair does not tangle and can be used permanently (day and night).
7. High colour resistance.
8. Good knotting resistance i.e. knots last longer.





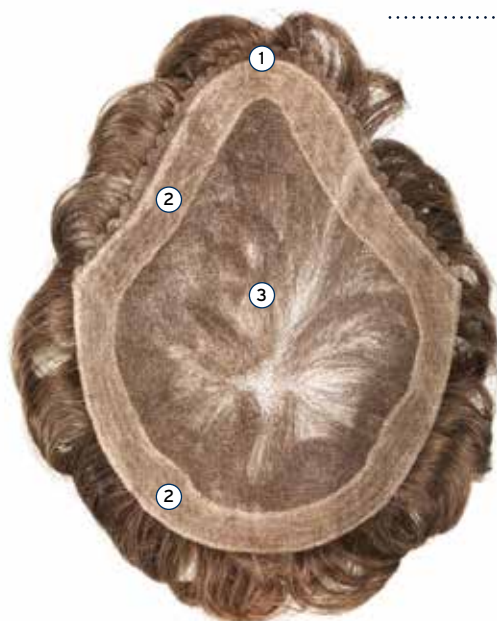
## MT-Light

COSMO HAIR

# COSMO HAIR

## MT-Light

COSMO HAIR



- ① Scallop-Front, fine Welded-Mono, single-layered
- ② fine Welded-Mono, double-layered
- ③ fine Welded-Mono, single-layered

23.5 x 17.5 cm

### MT-Light

COSMO HAIR

#### Fine Welded-Mono without PU

<b>Size:</b>	23.5 x 17.5 cm
<b>Hair quality:</b>	COSMO HAIR: 100 % heat-resistant synthetic fibre
<b>Hair style:</b>	indirect parting left
<b>Hair length:</b>	6 - 10 cm
<b>Hair volume:</b>	light, 100 - 115 %
<b>Base material:</b>	fine Welded-Mono
<b>Front:</b>	single-layered fine Welded-Mono (Hollywood technique) with Scallop-Front (Flower-Front), 0.5 cm
<b>Adhesive surface:</b>	all around on double-layered fine Welded-Mono / no PU!
<b>Colours:</b>	1-B, 2-B, 4, 6, 7, 10, 12-G, 14, 16, 60 2B/10, 2B/40, 4/20, 4/40, 4/60, 4/90, 10/20, 10/40, 10/60, 10/85, 11/75, 12/25, 12/50, 14/40, 14/60

### MT-LIGHT

## LACE-FRONT-SYSTEM

The hair system MT-Light offers a Lace-Front-System with a PU-free stable open front. Light hair styles are possible while PU is not shining through.

The base material is made of fine Welded-Mono. At the forefront the Welded-Mono is 0.5 cm and single-layered with Scallop-Front (Flower-Front). Behind this very thin front the Welded-Mono is 2.5 cm and double-layered. On this part the adhesive tapes can be attached without damaging the knots.

## → MATRIX HAIR

HEAT-RESISTANT SYNTHETIC FIBRE  
WITH 50% HUMAN HAIR

**manager**top®  
Hair Systems



MT-2500, MT-2700

## MATRIX HAIR

**MATRIX HAIR** is a newly developed synthetic hair fibre. This fibre is made of polyester mixed with 50% human hair. Exception: White hair is made of MATRIX HAIR. Therefore colour 60 consists of 100% MATRIX HAIR.

### Characteristics:

1. Maximum heat-resistance is 230°C.
2. 50% synthetic hair and 50% Premium Remy human hair (Indo Remy Hair).
3. Heat-resistance gives a long-lasting hair style (curls).
4. Hair does not tangle. Hair piece can be used permanently (day and night).
5. High colour resistance. The human hair part can be re-dyed.
6. Good knotting resistance; i.e. knots last longer.
7. Feels like human hair.



**MT-2500**

MATRIX HAIR



- ① Scallop-Front, fine Welded-Mono, single-layered
- ② thin transparent PU-coating
- ③ Superfine-Mono
- ④ PU adhesive surface

24 x 18 cm

MT-2500 MATRIX HAIR	
<b>Superfine-Mono with Lace-Front</b>	
<b>Size:</b>	24 x 18 cm
<b>Hair quality:</b>	MATRIX HAIR: 50% heat-resistant synthetic fibre / 50% Premium Remy human hair (Indo Remy Hair)
<b>Hair style:</b>	without parting, freestyle
<b>Hair length:</b>	8 - 12 cm
<b>Hair volume:</b>	light to medium, 110 - 120 %
<b>Base material:</b>	Superfine-Monofilament
<b>Front:</b>	fine Welded-Mono (Hollywood technique) with Scallop-Front (Flower-Front), single-layered, 0.5 cm without PU + 2.5 cm with thin transparent PU-coating
<b>Adhesive surface:</b>	PU on sides and back area and behind lace in front area
<b>Colours:</b>	1-B, 2-B, 3, 4, 6, 7, 8, 10, 11, 12, 12-G, 14, 16, 18, 21, 60 2B/10, 2B/40, 4/20, 4/40, 4/60, 4/90, 10/20, 10/40, 10/60, 11/75, 12/25, 12/50, 14/40, 14/60



**MT-2700**

MATRIX HAIR



- ① Scallop-Front, fine Welded-Mono, single-layered
- ② thin transparent PU-coating
- ③ Welded-Mono, medium

24 x 18 cm

MT-2700 MATRIX HAIR	
<b>Fine Welded-Mono (medium strong) with thin transparent PU-coating and Soft-Mono-Lace-Front</b>	
<b>Size:</b>	24 x 18 cm
<b>Hair quality:</b>	MATRIX HAIR: 50% heat-resistant synthetic fibre / 50% Premium Remy human hair (Indo Remy Hair)
<b>Hair style:</b>	indirect parting left
<b>Hair length:</b>	8 - 12 cm
<b>Hair volume:</b>	extra-light to light, 90 - 100 %
<b>Base material:</b>	fine Welded-Monofilament
<b>Front:</b>	fine Welded-Mono (Hollywood technique) with Scallop-Front (Flower-Front), single-layered, 0.5 cm without PU + 2.5 cm with thin transparent PU-coating
<b>Adhesive surface:</b>	thin transparent PU coating all around
<b>Colours:</b>	1-B, 2-B, 3, 4, 6, 7, 10, 12-G, 14, 15, 16, 18, 21, 60 2B/10, 2B/40, 4/20, 4/40, 4/60, 4/90, 10/20, 10/40, 10/60, 11/30, 11/75, 12/25, 12/50, 14/40, 14/60



→ **SYNTHETIC HAIR**  
 SYNTHETIC HAIR FIBRE (MODACRYL)



**MT-410**  
**MT-415**

**MT-410**  
**MT-415**



- ① Scallop-Front, fine Welded-Mono
- ② thin PU adhesive surface
- ③ Fine-Monofilament

23.5 x 17.5 cm  
 21 x 15.5 cm

MT-410, MT-415, MT-510

## READY-TO-WEAR!

The styles MT-410, MT-415 and MT-510 are real Ready-to-Wear hairsystems. The pre-cut is fine and natural. A customization of the hair style (trimming or shorter hair style) can be easily and quickly realised.

The Ready-to-Wear technique is a real innovation on the hairsystem-market. The lightness, the nearly invisible Lace-Front and the extremely natural grey colour tones will delight your customers.

### MT-410 · MT-415

#### Fine-Mono, PU-edge and Lace-Front

<b>Size:</b>	<b>MT-410</b> <b>MT-415</b>	<b>23.5 x 17.5 cm</b> <b>21 x 15.5 cm</b>
<b>Hair quality:</b>	synthetic hair	
<b>Hair style:</b>	indirect parting left, Ready-to-Wear	
<b>Hair length:</b>	5 - 10 cm	
<b>Hair volume:</b>	light, 100 %	
<b>Base material:</b>	Fine-Monofilament	
<b>Front:</b>	thin PU with 0.5 cm fine Welded-Mono (Hollywood technique) with Scallop-Front (Flower-Front)	
<b>Adhesive surface:</b>	thin 2.5 cm PU all around and T-surface in neck area	
<b>Colours:</b>	1-B, 2-B, 4, 6, 10, 12, 14/16-14, 60 2B/10, 2B/40, 4/20, 4/40, 4/60, 4/80, 4/90, 10/20, 10/40, 10/60, 10/85, 11/75, 12/25, 12/50, 14/40, 14/60	
<b>Grey colours:</b>	natural grey colour tones with more grey in front and temple area	





## MT-510

## MT-510



- ① Scallop-Front, fine Welded-Mono
- ② thin PU adhesive surface
- ③ fine Welded-Monofilament

24 x 17.5 cm

MT-510	
Fine Welded-Mono, PU-edge and Lace-Front	
<b>Size:</b>	24 x 17.5 cm
<b>Hair quality:</b>	synthetic hair
<b>Hair style:</b>	Freestyle, with a lot of motion
<b>Hair length:</b>	5 - 8 cm
<b>Hair volume:</b>	light, 100 %
<b>Base material:</b>	fine Welded-Monofilament
<b>Front:</b>	fine Welded-Mono (Hollywood-technique) with Scallop-Front (Flower-Front), single-layered, 0.5cm without PU + 2.5 cm with thin transparent PU-coating
<b>Adhesive surface:</b>	thin 2.5 cm PU all around
<b>Colours:</b>	1-B, 2-B, 4, 6, 10, 12, 14/16-14, 60 2B/10, 2B/40, 4/20, 4/40, 4/60, 4/80, 4/90, 10/20, 10/40, 10/60, 10/85, 11/75, 12/25, 12/50, 14/40, 14/60
<b>Grey colours:</b>	natural grey colour tones with more grey in front and temple area



→ **SYNTHETIC HAIR**  
*SYNTHETIC HAIR FIBRE (MODACRYL)*



The transparent PU-Front offers a custom made order ex stock. The extra-thin PU-front can be individually cut (receding hairline). Moreover it is very natural and long-lasting. This hairsystem provides high flexibility and immediate delivery at the same time.

**Standardised Custom Made ex stock:**

- 4 hairsystems available in 6 basic sizes  
**MT-800:** 26 x 19 cm  
individual base cutting to 23 x 18 cm,  
20 x 16 cm and 18.5 x 15 cm  
**MT-430:** 21 x 13.5 cm  
**MT-450:** 21 x 15.5 cm  
**MT-480:** 23 x 18 cm
- individual front cutting for natural receding hairline
- 34 colours available for immediate delivery

PU-FRONT

MT-800, MT-430, MT-450, MT-480  
**PU-FRONT**

**MT-800**



- ① Scallop front
- ② transparent PU-front
- ③ Superfine-Mono
- ④ PU adhesive surface

26 x 19 cm  
23 x 18 cm  
20 x 16 cm  
18.5 x 15 cm

**MT-800**

**Superfine-Mono  
and transparent PU-Front**

<b>Size:</b>	26 x 19 cm, individual cutting to size 23 x 18 cm, 20 x 16 cm and 18.5 x 15 cm
<b>Hair quality:</b>	synthetic hair
<b>Hair style:</b>	without parting, freestyle
<b>Hair length:</b>	9 - 13 cm
<b>Hair volume:</b>	medium, 130 %
<b>Base material:</b>	Superfine-Monofilament
<b>Front:</b>	very thin and transparent PU-Front, 0.2 mm thin
<b>Adhesive surface:</b>	PU-Front, PU all around and T-surface in neck area
<b>Colours:</b>	2, 2-B, 3, 4, 6, 7, 8, 10, 11, 12, 12-G, 14, 16, 18, 21, 60 2B/10, 2B/40, 4/20, 4/40, 4/60, 4/80, 4/90, 10/20, 10/40, 10/60, 10/85, 11/30, 11/75, 12/25, 12/50, 14/20, 14/40, 14/60



## MT-430



- ① Scallop front
- ② transparent PU-front
- ③ Superfine-Mono
- ④ PU adhesive surface

21 x 13.5 cm

## MT-450



- ① Scallop front
- ② transparent PU-front
- ③ Superfine-Mono
- ④ PU adhesive surface

21 x 15.5 cm

## MT-480



- ① Scallop front
- ② transparent PU-front
- ③ Superfine-Mono
- ④ PU adhesive surface

23 x 18 cm

### MT-430 · MT-450 · MT-480

#### Superfine-Mono and transparent PU-Front

<b>Size:</b>	MT-430:	21 x 13.5 cm
	MT-450:	21 x 15.5 cm
	MT-480:	23 x 18 cm

**Hair quality:** synthetic hair

**Hair style:** without parting, freestyle

**Hair length:** 9 - 13 cm

**Hair volume:** medium, 130 %

**Base material:** Superfine-Monofilament

**Front:** very thin and transparent PU-Front, 0.2 mm thin

**Adhesive surface:** PU-Front, PU all around and T-surface in neck area

**Colours:** 2, 2-B, 3, 4, 6, 7, 8, 10, 12, 12-G, 14, 16, 18, 60  
2B/10, 2B/40, 4/20, 4/40, 4/60, 4/90, 10/20,  
10/40, 10/60, 11/30, 11/75, 12/25, 12/50, 14/40,  
14/60



→ **SYNTHETIC HAIR**  
 SYNTHETIC HAIR FIBRE (MODACRYL)



PU-FRONT

MT-300, MT-400, MT-103

## PU-FRONT

### MT-300



- ① Underventilation
- ② Fine-Mono
- ③ PU adhesive surface

24 x 18 cm

#### MT-300

##### Fine-Mono and PU-edge

<b>Size:</b>	24 x 18 cm
<b>Hair quality:</b>	synthetic hair
<b>Hair style:</b>	without parting, freestyle
<b>Hair length:</b>	9 - 13 cm
<b>Hair volume:</b>	medium, 120 - 130 %
<b>Base material:</b>	Fine-Monofilament with PU-edge
<b>Front:</b>	PU-Front, underventilated with baby hair
<b>Adhesive surface:</b>	PU all around and T-surface in neck area
<b>Colours:</b>	1, 2, 2-B, 3, 4, 6, 8, 10, 12, 14, 16, 60 2B/10, 4/20, 4/40, 4/60, 4/90, 10/20, 10/40, 10/60, 11/30, 11/75, 12/25, 12/50, 14/40, 14/60

## MT-400



- ① Underventilation
- ② Fine-Mono
- ③ PU adhesive surface

24 x 18 cm

### MT-400

#### Fine-Mono and PU-edge

<b>Size:</b>	24 x 18 cm
<b>Hair quality:</b>	synthetic hair
<b>Hair style:</b>	parting left
<b>Hair length:</b>	7 - 13 cm
<b>Hair volume:</b>	medium, 120 - 130 %
<b>Base material:</b>	Fine-Monofilament with PU-edge
<b>Front:</b>	PU-Front, underventilated with baby hair
<b>Adhesive surface:</b>	PU all around and T-surface in neck area
<b>Colours:</b>	2, 2-B, 3, 4, 6, 8, 10, 12, 12-G, 14, 16, 18, 60 2B/10, 2B/40, 4/20, 4/40, 4/60, 4/90, 10/20, 10/40, 10/60, 11/30, 11/75, 12/25, 12/50, 14/40, 14/60

## MT-103



- ① Underventilation
- ② PU parting on silk lace
- ③ Superfine-Mono
- ④ transparent PU-edge on silk lace

24 x 18 cm

### MT-103

#### Superfine-Mono and PU-undercoated parting

<b>Size:</b>	24 x 18 cm
<b>Hair quality:</b>	synthetic hair
<b>Hair style:</b>	PU-undercoated parting left
<b>Hair length:</b>	11 - 15 cm
<b>Hair volume:</b>	light to medium, 100 - 115 %
<b>Base material:</b>	Superfine-Monofilament with transparent PU-edge and parting on silk lace
<b>Front:</b>	PU-Front, underventilated with baby hair
<b>Adhesive surface:</b>	PU all around and on parting
<b>Colours:</b>	1, 2, 2-B, 3, 4, 6, 8, 10, 12, 14, 16, 60 2B/10, 4/20, 4/40, 4/90, 10/20, 10/40, 10/60, 11/30, 11/75, 12/25, 12/50, 14/40



## → HUMAN HAIR

INDO HAIR

MT-6000

HUMAN HAIR



- ① fine Welded-Mono
- ② thin transparent PU-edge

24 x 18 cm  
individual base cutting  
to 15 x 12 cm

MT-6000

HUMAN HAIR

### Fine Welded-Mono with thin transparent PU-edge

<b>Size:</b>	24 x 18 cm individual base cutting to 15 x 12 cm
<b>Hair quality:</b>	human hair: Premium Remy Hair (100% Indo Remy Hair)
<b>Hair style:</b>	Freestyle
<b>Hair length:</b>	15 cm
<b>Hair volume:</b>	light-medium to medium, 115 - 130 %
<b>Base material:</b>	fine Welded-Mono
<b>Front:</b>	fine Welded-Mono (Hollywood technique) with Scallop-Front (Flower-Front), single-layered, 0.8 cm without PU + 4 cm thin transparent PU-coating
<b>Adhesive surface:</b>	thin transparent PU-coating of 4-6 cm width all around
<b>Colours:</b>	2, 2-B, 3, 4, 6, 7, 8, 10, 12, 12-G, 14, 16, 21 2B/10, 2B/40, 4/20, 4/40, 4/60, 4/90, 10/20, 10/40, 10/60, 11/30, 11/75, 12/25, 12/50, 14/40



## MT-120

HUMAN HAIR



- ① Scallop front
- ② transparent PU-front
- ③ Fine-Mono
- ④ PU adhesive surface

26 x 19 cm  
20.5 x 17.5 cm  
19 x 15 cm  
17 x 13.5 cm

### MT-120 HUMAN HAIR

#### Fine-Mono with transparent PU-Front

<b>Size:</b>	26 x 19 cm, individual base cutting to 19 x 15 cm and 17 x 13.5 cm
<b>Hair quality:</b>	human hair: Indo Hair (white hair made of heat-resistant synthetic fibre)
<b>Hair style:</b>	without parting, freestyle
<b>Hair length:</b>	12 - 15 cm
<b>Hair volume:</b>	medium to medium-heavy, 130 - 140 %
<b>Base material:</b>	Fine-Monofilament
<b>Front:</b>	transparent PU-Front, 0.4 mm thin
<b>Adhesive surface:</b>	PU-Front and PU all around
<b>Colours:</b>	1-B, 2-B, 3, 4, 6, 7, 8, 10, 12, 14, 15, 16, 18, 21 2B/10, 2B/40, 4/20, 4/40, 4/60, 4/90, 10/20, 10/40, 10/60, 11/30, 11/75, 12/25, 12/50, 14/40

## MT-420

HUMAN HAIR



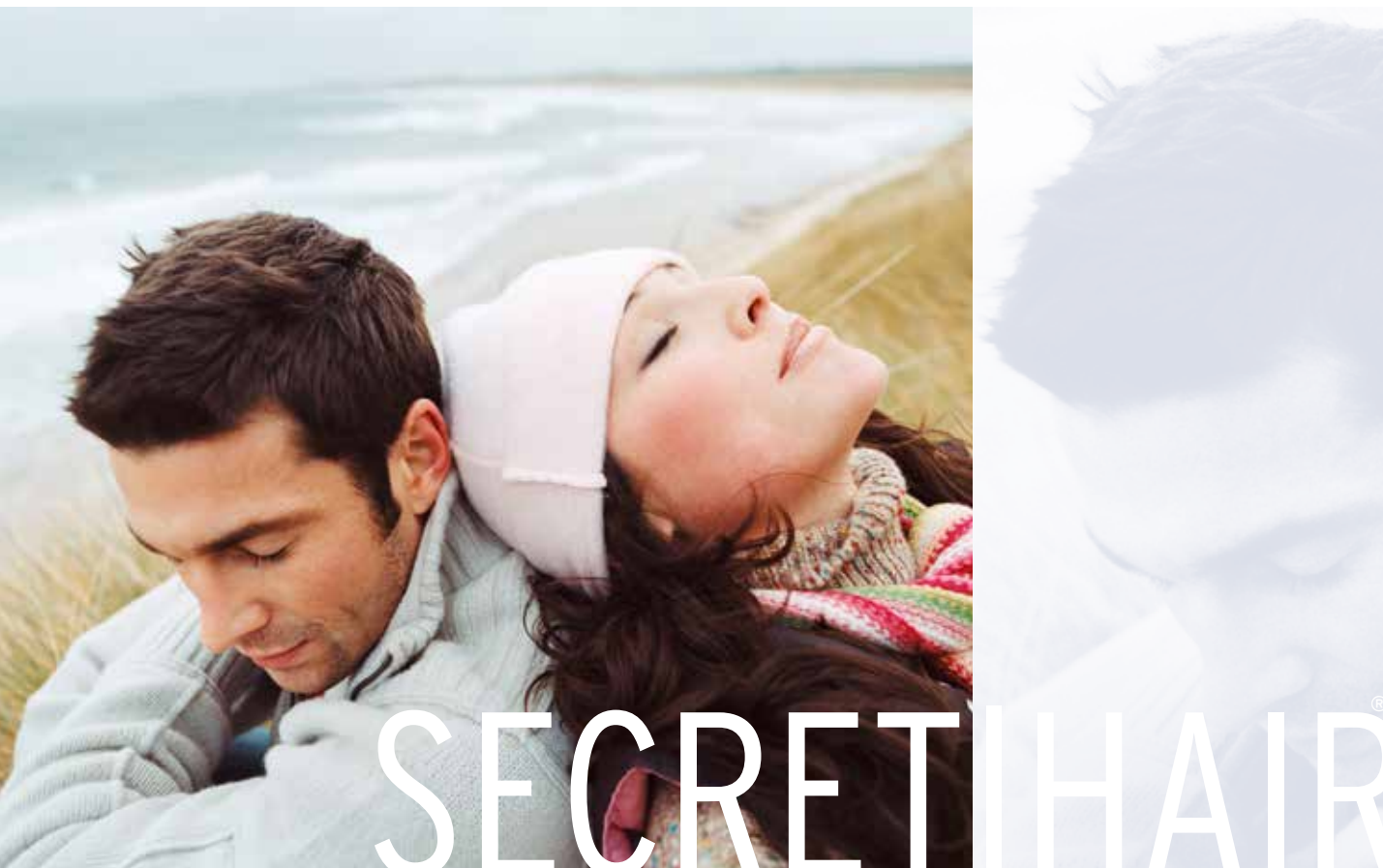
- ① Underventilation
- ② Fine-Mono
- ③ PU adhesive surface

24 x 18 cm

### MT-420 HUMAN HAIR

#### Fine-Mono with PU-edge

<b>Size:</b>	24 x 18 cm
<b>Hair quality:</b>	human hair: Indo Hair (white hair made of heat-resistant synthetic fibre)
<b>Hair style:</b>	parting left
<b>Hair length:</b>	12 - 15 cm
<b>Hair volume:</b>	medium-heavy to heavy, 150 - 160 %
<b>Base material:</b>	Fine-Monofilament with PU-edge
<b>Front:</b>	PU-Front, underventilated with baby hair
<b>Adhesive surface:</b>	PU all around and T-surface in neck area
<b>Colours:</b>	1-B, 2, 2-B, 3, 4, 6, 8, 10, 12, 14, 16 2B/10, 2B/40, 4/20, 4/40, 4/60, 4/90, 10/20, 10/40, 10/60, 11/30, 11/75, 12/25, 12/50, 14/40



MT-1000, MT-3000, MICRO-SKIN, SECRET-SKIN, ACTIVE-SKIN, STRONG-SKIN

## SECRET|HAIR®

Secret|Hair® hairsystems are ideally suitable for permanent bonding. All 6 hairsystems can be easily cut into the required size and are available for immediate delivery in a wide range of colours. The Welded-Mono styles MT-1000 and MT-3000 ensure high comfort and very good durability. The skin-toupees (PU) MICRO-SKIN, SECRET-SKIN, ACTIVE-SKIN and STRONG-SKIN enable a very natural look and simple cleaning.

For permanent bonding the client's scalp is cleaned with special products and thereby prepared for bonding. The permanent bonding is realised with medical liquid adhesive (method A) or with special adhesive tapes (method B). The connection will last for about 4 weeks.

The customer always receives 2 hairsystems. It enables thorough cleaning of the removed one. This is the basis for professional work and a long lasting connection. Bonding, removing and cleaning is always done in the studio using professional adhesive, cleaning and care products. These products ensure best attachment on the client's scalp as well as minimization of the hairsystem's wear out.

Please find information about SECRET|HAIR® adhesive-, cleaning- and care-products on page 29.

Please ask for our detailed brochure  
SECRET|HAIR® Bonding.



① Soft-Mono-Lace  
(Welded-Mono)

26 x 19 cm

MT-1000	HUMAN HAIR
<b>Soft-Mono-Lace (Welded-Mono)</b>	
<b>Hair volume:</b>	light-medium to medium, 115 - 130 %
<b>Size:</b>	26 x 19 cm
<b>Hair quality:</b>	human hair: Indo Hair, white (grey) hair made of heat-resistant synthetic fibre
<b>Hair style:</b>	indirect parting left, Freestyle, all styles possible
<b>Hair length:</b>	15 cm
<b>Base material:</b>	Welded-Mono (medium strong - Soft-Mono-Lace)
<b>Front:</b>	Welded-Mono (medium-strong)
<b>Adhesive surface:</b>	none, special adhesive necessary for lace
<b>Colours:</b>	1-B,2, 2-B, 3, 4, 6, 7, 9, 10, 11, 12-G, 14, 15, 16 2B/10, 2B/20, 2B/40, 4/20, 4/40, 4/90, 10/20, 10/40, 10/60, 10/85, 11/75, 12/50, 14/40

① Soft-Mono-Lace  
(Welded-Mono)

26 x 19 cm

MT-3000	HUMAN HAIR
<b>Soft-Mono-Lace (Welded-Mono)</b>	
<b>Hair volume:</b>	medium, 130 %
<b>Size:</b>	26 x 19 cm
<b>Hair quality:</b>	human hair: Elegant Remy Hair, high quality Indo Hair (Indo Special), white (grey) hair made of heat-resistant synthetic fibre
<b>Hair style:</b>	All-Back-Style, stand-up knotting from front to back, all styles possible
<b>Hair length:</b>	20 cm
<b>Base material:</b>	Welded-Mono (medium strong - Soft-Mono-Lace)
<b>Front:</b>	Welded-Mono (medium strong)
<b>Adhesive surface:</b>	none, special adhesive necessary for lace
<b>Colours:</b>	1-B, 2-B, 3, 4, 6, 7, 10, 11, 12-G, 14, 15, 16, 21, 23A/26, 31, 33/32B Chocolate/Cream-Root (10/27/20R+Root8), Honey-Toast (12/15/25-12), Honey-Mix (12A/25R/28), Vanilla-Root (14/26-14), Champagne-Root (20R/23+Root 10) 2B/10, 2B/20, 2B/40, 4/20, 4/40, 4/60, 4/90, 10/20, 10/40, 10/60, 11/30, 11/75, 12/25, 12/50, 14/40





## MICRO-SKIN

HUMAN HAIR



① very thin transparent PU-Skin, G2

26 x 19 cm

MICRO-SKIN	HUMAN HAIR
<b>Very thin transparent PU-Skin (Polyurethan)</b>	
<b>Size:</b>	26 x 19 cm
<b>Hair quality:</b>	human hair: Elegant Remy Hair, high quality Indo Hair (Indo Special), white (grey) hair made of heat-resistant synthetic fibre
<b>Hair style:</b>	Freestyle, all styles possible
<b>Hair length:</b>	15 cm
<b>Hair volume:</b>	light to medium, 115 %
<b>Base material:</b>	very thin transparent PU, strength G2
<b>Front:</b>	transparent PU, strength G2
<b>Adhesive surface:</b>	all over PU
<b>Colours:</b>	1-B, 2, 3, 4, 7, 11, 12-G, 14, 15, 16



## SECRET-SKIN

HUMAN HAIR



① thin transparent PU-Skin, G6

26 x 19 cm

SECRET-SKIN	HUMAN HAIR
<b>Thin transparent PU-Skin (Polyurethan)</b>	
<b>Size:</b>	26 x 19 cm
<b>Hair quality:</b>	human hair: Elegant Remy Hair, high quality Indo Hair (Indo Special), white (grey) hair made of heat-resistant synthetic fibre
<b>Hair style:</b>	Freestyle, all styles possible
<b>Hair length:</b>	15 cm
<b>Hair volume:</b>	light to medium, 115 - 120 %
<b>Base material:</b>	thin transparent PU, strength G6
<b>Front:</b>	transparent PU, strength G6
<b>Adhesive surface:</b>	all over PU
<b>Colours:</b>	1-B, 2, 2-B, 3, 4, 6, 7, 9, 10, 11, 12-G, 14, 15, 16, 21, 23A/26 2B/10, 2B/20, 2B/40, 2B/60, 4/20, 4/40, 4/90, 10/20, 10/40, 10/60, 11/30, 11/75, 12/25, 12/50, 14/40



## ACTIVE-SKIN

HUMAN HAIR



① transparent PU-Skin, G4

② transparent PU-Skin with Silk-Inlay, G8

26 x 19 cm

ACTIVE-SKIN HUMAN HAIR	
<b>Transparent PU-Skin (Polyurethan) with Silk-Inlay</b>	
<b>Size:</b>	26 x 19 cm
<b>Hair quality:</b>	human hair: Elegant Remy Hair, high quality Indo Hair (Indo Special), white (grey) hair made of heat-resistant synthetic fibre
<b>Hair style:</b>	Freestyle, all styles possible
<b>Hair length:</b>	15 cm
<b>Hair volume:</b>	medium, 130 %
<b>Base material:</b>	transparent PU with Silk-Inlay, strength G8
<b>Front:</b>	0.5 cm transparent PU, strength G4
<b>Adhesive surface:</b>	all over PU
<b>Colours:</b>	1-B, 2, 2-B, 3, 4, 6, 7, 9, 10, 11, 12-G, 14, 15, 16, 21 2B/10, 2B/20, 2B/40, 4/20, 4/40, 4/90, 10/20, 10/40, 10/60, 10/85, 11/75, 12/50, 14/40



## STRONG-SKIN

HUMAN HAIR



① stable transparent PU-Skin, G12

26 x 19 cm

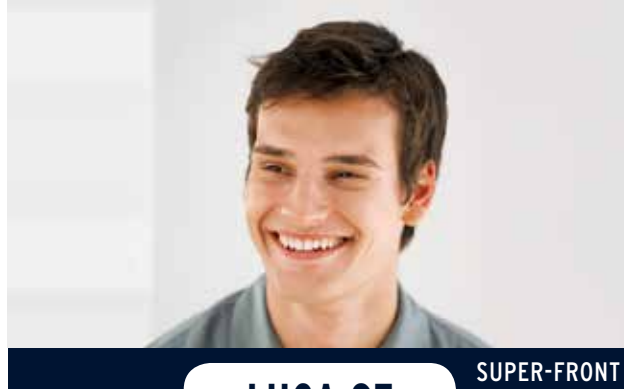
STRONG-SKIN HUMAN HAIR	
<b>Stable transparent PU-Skin (Polyurethan)</b>	
<b>Size:</b>	26 x 19 cm
<b>Hair quality:</b>	human hair: Elegant Remy Hair, high quality Indo Hair (Indo Special), white (grey) hair made of heat-resistant synthetic fibre
<b>Hair style:</b>	Freestyle, all styles possible
<b>Hair length:</b>	15 cm
<b>Hair volume:</b>	medium to medium-heavy, 140 %
<b>Base material:</b>	stable transparent PU, strength G12
<b>Front:</b>	transparent PU, strength G12
<b>Adhesive surface:</b>	all over PU
<b>Colours:</b>	1-B, 2, 2-B, 3, 4, 6, 7, 9, 10, 11, 12-G, 14, 15, 16, 21, 23A/26 2B/10, 2B/20, 2B/40, 4/20, 4/40, 4/90, 10/20, 10/40, 10/60, 11/30, 11/75, 12/50, 14/40

→ **MEN'S WIGS**  
SYNTHETIC



LUCA SF, ALISON, BEN SF

**managertop**<sup>®</sup>  
Hair Systems



- ① Fine-Mono
- ② Super-Front, very fine Welded-Mono
- ③ hand-tied on Mono-Lace
- ④ size adjustable through elastic ribbon
- ⑤ adhesive surface

55 - 57 cm

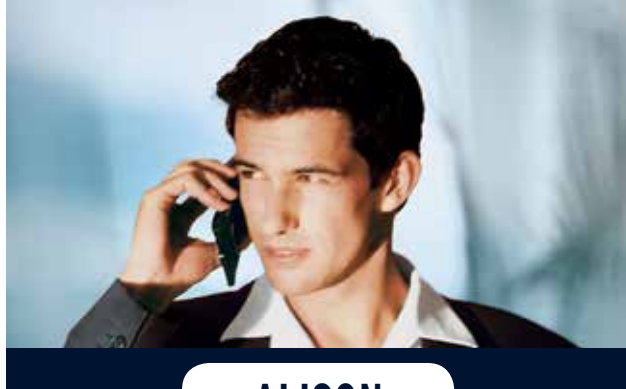
**Luca SF**

**Mono + hand-tied + Super-Front**

<b>Size:</b>	55 - 57 cm
<b>Hair quality:</b>	synthetic hair
<b>Hair style:</b>	indirect parting left
<b>Hair length:</b>	4.5 - 9.5 cm
<b>Hair volume:</b>	light to light-medium, 100 - 115 %
<b>Base material:</b>	top area Monofilament and back area fine Mono-Net
<b>Front:</b>	Super-Front: very fine Welded-Mono (Hollywood technique), single-layered, 2 - 4 cm without PU, strongly receding hairline in temple area
<b>Adhesive surface:</b>	PU in temple and neck area
<b>Colours:</b>	1-B, 2-B, 4, 6/8-6, 8/12G-8, 10, 12, 14/16-14, 16/21-16, 60 2B/10, 4/20, 4/40, 4/90, 10/20, 10/40, 10/60, 11/30, 11/40, 11/75, 12/25, 12/50, 14/40, 14/60
<b>Grey colours:</b>	natural grey colour tones with more grey in front and temple area

MONO + HAND-TIED + SUPER-FRONT



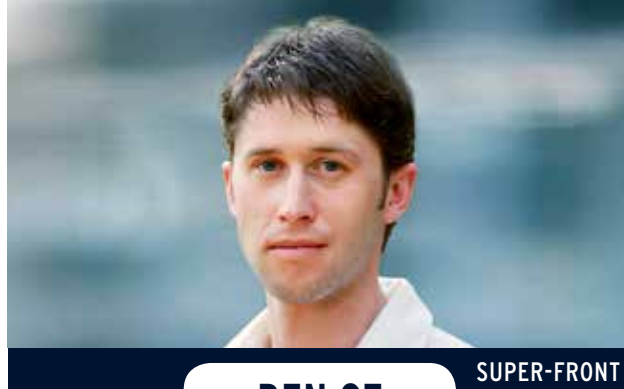


ALISON



- ① Fine-Mono
  - ② PU-Front
  - ③ hand-tied on Mono-Lace
  - ④ size adjustable through elastic ribbon
  - ⑤ adhesive surface
- 55 - 56 cm  
59 - 60 cm  
61 - 62 cm

Alison · Alison Large · Alison Super Large			
Mono + hand-tied			
Size:	Alison Alison Large Alison Super Large	55 - 56 cm 59 - 60 cm 61 - 62 cm	
Hair quality:	synthetic hair		
Hair style:	indirect parting left		
Hair length:	4.5 - 9 cm		
Hair volume:	light-medium to medium, 115 - 130 %		
Base material:	top area Monofilament and back area fine Mono-Net		
Front:	PU-Front, lightly underventilated		
Adhesive surface:	PU on front, temple and neck area		
Colours: Alison Alison Large	1-B, 2-B, 4, 6/8-6, 8/12G-8, 10, 12, 14/16-14, 16/21-16, 60 2B/10, 4/20, 4/40, 4/90, 10/20, 10/40, 10/60, 11/30, 11/40, 11/75, 12/25, 12/50, 14/40, 14/60		
Colours: Alison Super Large	2-B, 6/8-6, 8/12G-8, 14/16-14, 60 2B/10, 4/20, 4/40, 4/90, 10/40, 10/60, 11/30, 11/75, 12/25, 14/40, 14/60		
Grey colours:	natural grey colour tones with more grey in front and temple area		



BEN SF

SUPER-FRONT



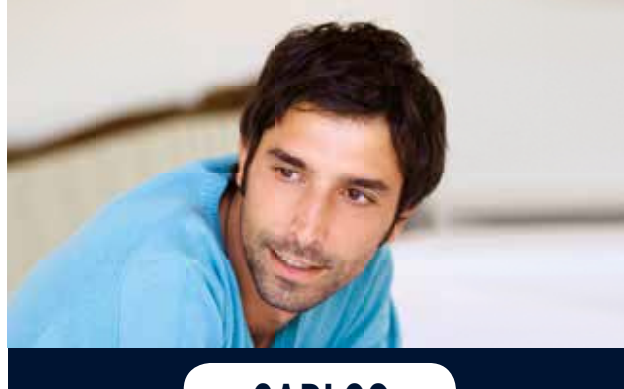
- ① Fine-Mono
  - ② Super-Front, very fine Welded-Mono
  - ③ wefts in back area
  - ④ size adjustable through elastic ribbon
  - ⑤ adhesive surface
- 54 - 56 cm  
57 - 59 cm

Ben SF · Ben Medium SF			
Mono-Top + Wefts + Super-Front			
Size:	Ben SF Ben Medium SF	54 - 56 cm 57 - 59 cm	
Hair quality:	synthetic hair		
Hair style:	indirect parting left, easy to style into freestyle		
Hair length:	5 - 7.5 cm		
Hair volume:	light to light-medium, 100 - 115 %		
Base material:	top area Monofilament and back area wefts		
Front:	Super-Front: very fine Welded-Mono (Hollywood technique), single-layered, 2 - 6 cm without PU, strongly receding hair line in temple area		
Adhesive surface:	PU in temple and neck area		
Colours: Ben SF Ben Medium SF	1-B, 2-B, 4, 6/8-6, 8/12G-8, 10, 12, 14/16-14, 16/21-16, 60 2B/10, 4/20, 4/40, 4/90, 10/20, 10/40, 10/60, 11/30, 11/40, 11/75, 12/25, 12/50, 14/40, 14/60		
Grey colours:	natural grey colour tones with more grey in front and temple area		

→ **MEN'S WIGS**  
SYNTHETIC



CARLOS, TIM, FELIX



**CARLOS**



- ① Fine-Mono
- ② PU-Front
- ③ wefts in back area
- ④ size adjustable through elastic ribbon
- ⑤ adhesive surface

56 - 58 cm

**Carlos**

**Mono-Top + Wefts**

<b>Size:</b>	56 - 58 cm
<b>Hair quality:</b>	synthetic hair
<b>Hair style:</b>	Freestyle
<b>Hair length:</b>	5 - 8.5 cm
<b>Hair volume:</b>	light-medium to light, 115 - 130 %
<b>Base material:</b>	top area fine Monofilament and back area wefts
<b>Front:</b>	PU-Front + 0.3 cm stable Lace-Front, double-layered
<b>Adhesive surface:</b>	PU in front, temple and neck area
<b>Colours:</b>	1-B, 2-B, 4, 6/8-6, 8/12G-8, 10, 12, 14/16-14, 16/21-16, 60 2B/10, 4/20, 4/40, 4/90, 10/20, 10/40, 10/60, 11/30, 11/40, 11/75, 12/25, 12/50, 14/40, 14/60
<b>Grey colours:</b>	natural grey colour tones with more grey in front and temple area

MONO + WEFTS



TIM



## Tim · Tim Medium

Wefted Wig  
with Mono-Crown

<b>Size:</b>	Tim Tim Medium	54 - 56 cm 57 - 59 cm
<b>Hair quality:</b>	synthetic hair	
<b>Hair style:</b>	indirect parting left	
<b>Hair length:</b>	5 - 7.5 cm	
<b>Hair volume:</b>	light-medium, 115 %	
<b>Base material:</b>	Wefts and Mono-Crown	
<b>Front:</b>	PU-Front with underventilated edge	
<b>Adhesive surface:</b>	PU in front, temple and neck area	
<b>Colours:</b>	2-B, 4, 6/8-6, 8/12G-8, 10, 12, 14/16-14, 16/21-16, 60 2B/10, 4/20, 4/40, 4/90, 10/20, 10/40, 10/60, 11/30, 11/40, 11/75, 12/25, 12/50, 14/40, 14/60	
<b>Grey colours:</b>	natural grey colour tones with more grey in front and temple area	

FELIX



## Felix

Mono-Top + Mono-Back  
with transparent PU-Front and PU-Neck

<b>Size:</b>	54 - 56 cm
<b>Hair quality:</b>	synthetic hair
<b>Hair style:</b>	Freestyle, no hair cut, specimen for creative work
<b>Hair length:</b>	10 cm
<b>Hair volume:</b>	medium, 130 %
<b>Base material:</b>	Fine-Mono in top and back area
<b>Front:</b>	extremely thin and transparent PU-Front
<b>Adhesive surface:</b>	PU in front and neck area
<b>Colours:</b>	4, 6, 8, 10, 12, 14, 16, 60 2B/10, 4/20, 4/40, 4/90, 10/20, 10/40, 10/60, 11/30, 11/75, 12/25, 12/50, 14/40



→ MEN'S WIGS  
*HUMAN HAIR*



# HUMAN HAIR

JAMES, MR. BOND

**manager<sup>®</sup>top**  
Hair Systems



James

HUMAN HAIR



Mr. Bond

HUMAN HAIR



- ① Fine-Mono
- ② Soft-Mono-Lace-Front from temple to temple
- ③ thin Mono-Net (elastic)
- ④ extra-grip PU
- ⑤ adhesive surface

55 - 57 cm



- ① Fine-Mono
- ② transparent PU with silk lace
- ③ soft Lace-Front (French Lace)
- ④ adhesive surface

55 - 57 cm

JAMES	HUMAN HAIR
<b>Mono + hand-tied with Soft-Mono-Lace-Front and extra-grip PU</b>	
<b>Size:</b>	55 - 57 cm
<b>Hair quality:</b>	human hair: Elegant Remy Hair, high quality Indo Hair (Indo-Special) white (grey) hair made of heat-resistant synthetic fibre
<b>Hair style:</b>	indirect parting left, easy to style into freestyle
<b>Hair length:</b>	7 - 9.5cm
<b>Hair volume:</b>	light-medium, 115 %
<b>Base material:</b>	Fine-Mono in top area and Fine-Mono-Net (elastic) in back area
<b>Front:</b>	Soft-Mono-Lace-Front (fine Welded-Mono) from temple to temple with Scallop-Front (Flower-Front)
<b>Adhesive surface:</b>	PU in temple and neck area, additionally extra-grip PU in front area, upper side of temple area and in neck area
<b>Colours:</b>	2, 4, 6/8-6, 8/12-8, 12-G, 14/16-14 2B/10, 4/20, 4/40, 4/90, 10/60, 11/30, 11/75, 14/40
<b>Grey colours:</b>	10% more grey in temple area

MR. BOND	HUMAN HAIR
<b>Fine-Mono + transparent PU and soft Lace-Front</b>	
<b>Size:</b>	55 - 57 cm
<b>Hair quality:</b>	human hair: Elegant Remy Hair, high quality Indo Hair (Indo-Special) white (grey) hair made of heat-resistant synthetic fibre
<b>Hair style:</b>	All-Back-Style, knotted from front to back, all styles possible
<b>Hair length:</b>	15 cm
<b>Hair volume:</b>	extra-light to light, 80-100 %
<b>Base material:</b>	Fine-Mono in top and back area, transparent PU with silk lace in side and back area
<b>Front:</b>	soft French-Lace-Front
<b>Adhesive surface:</b>	PU in back of Lace-Front, temple and neck area
<b>Colours:</b>	2, 4, 6/8-6, 8/12-8, 12-G, 14/16-14 2B/10, 4/20, 4/40, 4/90, 10/60, 11/30, 11/75, 14/40
<b>Grey colours:</b>	10% more grey in temple area





## → CUSTOM MADE ORDERS

### GENERAL INFORMATION

Your custom made order will be produced exactly according to your wishes. There are no limits in regard to your creativity. Time of delivery is 8-10 weeks upon receipt of your order. Often, we are able to reduce the maximum delivery time of 10 weeks. Your custom made order is binding. The toupee or hair piece will be produced especially for you. All our custom made orders are 100% hand-made. If possible, kindly use our "Manager Top" custom made order sheet. You can obtain this with a carbon copy direct from us. On page 34 we have also included a sample sheet that you can copy.

### STYLE

Please choose the desired type. Every style in regard to base, hair, fixing method etc. is possible. Either you choose a stock model as basis or you send us a pattern. We will also help you to create your own style. The models can be altered in various directions.

### CAP-SAMPLE-RING

The cap-sample-ring shows you 28 basic styles (base materials) for your custom made orders. Various combinations of these basic styles are possible.

Lace-Front-System	PU-Front <i>(transparent PU or PU on Monofilament)</i>	Bonding-System <i>(permanent attachment)</i>	Hair-Integration and Hair-Weaving
MT-410 MT-510 MT-2400 MT-2500 MT-2700 MT-6000 MT-Light	MT-103 MT-400 MT-450	MT-1000 MT-3000  Micro-Skin Secret-Skin Active-Skin Strong-Skin	Paris Palma HV-1.0 H-2 Valencia Bordeaux Granada / Optima Mono-Line-Integration Poly-Line-100 Poly-Line-200 Soft-Line-2.5 Soft-Line-3.5 Ribbon-Line-100



# CUSTOM MADE WIGS

## STYLES

MALE: Alison, Ben SF, Carlos, Felix, James, Luca SF, Mr. Bond

FEMALE: Aida, Adriana RH, Anastasia (Long) RH, Conny,  
Derma-Soft-100, Derma-Soft-200, Derma-Soft-300, Tosca

## SIZE / CAST

For the required size you can produce a cast (pattern), send us a sample or fill in the size on the custom made order sheet. Please use "cm". For the cast we offer you two different systems. Explanations of the cast systems you can find on page 32.

## HAIR VOLUME

super-light	60 %	medium	130 %
extra-light	80 %	medium-heavy	150 %
light	100 %	heavy	180 %
light-medium	115 %	extra-heavy	200 %

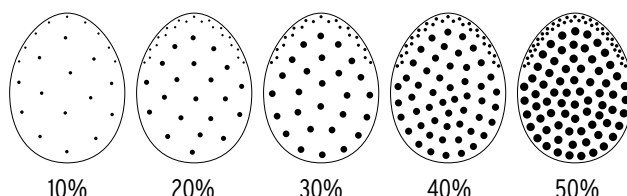
## HAIR COLOUR

Please attach enough hair to your order or choose the colour according to the Manager Top or Belle Madame colour rings (synthetic or human hair). If required, please state colour for front, temples etc. on the order sheet or mark it on your pattern.

Additional white hair (statement in %) will be added to the existing white hair in the basic colour.

Please choose strands/spotlights according to colour ring or hair sample or choose a spotlight-sample:

### Spotlight-Samples



## SEAL IN NAME

Our order number is always sealed inside the toupee. Upon request, customer's name or company's name can be sealed in as well.

## HAIR QUALITY

### Synthetic: Kanekalon (Modacryl)

Very high quality synthetic hair fibre. Can be transformed with steam at about 100°C.

### Indo Hair

Standard quality of Indian Human Hair. Roots and tips are mixed. Cuticles are fully removed. Hair is bleached and dyed gently.

### Elegant Remy Hair (Indo-Special)

High quality of Indian Human Hair. A mixture of Indo Hair and Premium Remy Hair (100 % Indo Remy Hair) to gain an improved quality compared to Indo Hair. Elegant Remy Hair offers a very good cost-effectiveness.

### Premium Remy Hair (100 % Indo Remy Hair)

Highest quality of Indian Human Hair. Roots and tips are not mixed. Hair is very gently bleached and dyed. Premium Remy Hair has approx. 50% cuticles and is especially recommended for blond colour.

### Euro Remy Hair (European Hair)

First class prepared European hair. Highest human hair quality. Roots and tips are not mixed. Cuticles have not been removed. For knotting approximately 5 cm of roots are bleached (this removes cuticles) to avoid tangling with knotting beards.

### MATRIX HAIR

MATRIX HAIR is a newly developed heat-resistant synthetic hair. This fibre is made of polyester mixed with 50% human hair (Premium Hair). Exception: white part is solely made of MATRIX HAIR. Colour 60 consists therefore of 100 % MATRIX HAIR.

Please find detailed information about characteristics of MATRIX HAIR on page 6.

### COSMO HAIR

COSMO HAIR is a newly developed heat-resistant synthetic fibre. The hair is made of polyester and is used without adding human hair. The synthetic fibre is very soft and hair fall is natural. COSMO HAIR is the alternative to human hair!

Please find detailed information about characteristics of COSMO HAIR on page 4.

→ Please find a master copy of our order form on page 34

## → ATTACHMENT SYSTEMS / CARE PRODUCTS / ACCESSORIES

### THE MANAGER TOP ACCESSORY RANGE

#### Care Products



#### SYNTHETIC HAIR CARE for synthetic hair

	Size	Art.No.	Description/Use
Shampoo	200 ml	5090	Shampoo for cleaning of synthetic hair
Balm	200 ml	5091	Shine and care for synthetic hair

#### PROFESSIONAL HAIR CARE for synthetic and human hair

	Size	Art.No.	Description/Use
Cleaner Solvant	200 ml	5092	Cleansing Spray for adhesive surfaces and scalp
Hair Shine	200 ml	5093	Perfect finish for human and synthetic hair

#### NATURAL HAIR CARE for human hair

	Size	Art.No.	Description/Use
VITAL Shampoo	200 ml	5085	Shampoo for soft, silky and luxurious human hair
	1,000 ml	5086	
VITAL Balm	200 ml	5087	Balm to repair and detangle the structure of human hair
	1,000 ml	5088	

## CARE PRODUCTS HUMAN HAIR

	Size	Art.No.	Description/Use
Soft Spray	200 ml	5073	Silicone spray conditioner, special softener for primed Indian human hair, builds up stressed hair, makes hair soft and shiny
Hair-Re-Color			
Standard	250 ml	5059.S	Hair toning to regain original hair colour
Brown	250 ml	5059.B	
Red	250 ml	5059.Red	
Remover-Shampoo	250 ml	5059.R	Shampoo for removing hair colour



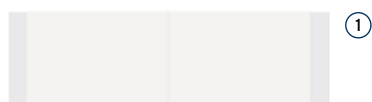
## BONDING: LIQUID ADHESIVES & CARE PRODUCTS

	Size	Art.No.	Description/Use
Track-Safe	15 ml 150 ml	5050 5052	Medical liquid adhesive for permanent full head attachment for up to 4 weeks (bonding method A)
Track-Power	40 ml 150 ml	5043 5042	Alternative for Track-Safe with higher adhesive strength, particularly suitable for high outside temperatures, high air humidity and stronger transpiration of customer
Skin-Bond	40 ml 150 ml	5045 5044	Medical liquid adhesive, specifically for Poly (PU-Skin) Systems (Polyurethan). Alternative for Track-Safe.
Ultra-Bond	125 ml	5056	Medical liquid adhesive for permanent full head attachment for up to 4 weeks (bonding method A)
Ultra-Bond-Touch with brush	40 ml	5056-Touch	Thinner version of Ultra-Bond, to touch-up (bond) lifting areas as front and sides and for attachment up to 2 weeks
Tight-Grip with sponge	40 ml	5054	Front-attachment for lace and PU, attachment for up to 2 weeks
Brown Liner Roll	25 mm x 2.7 m	5053	Adhesive tape with tissue for edge-bonding with Track-Safe (bonding method C)
Blue Peeling Gel	200 ml 1 Liter	5080 5081	Peeling gel to deeply clean skin, removes dandruff, scaling and crustration
Blue Deep Clean Shampoo	200 ml 1 Liter	5082 5083	Deep cleaning of skin and hair to remove fat and oil
Citrus Cleaner	1 Liter 5 Liter	5058.1L 5058.5L	Cleaner with citrus oil, cleaning of hairsystem and to remove bonding adhesives
Track-Safe-Remover	200 ml	5055	Dissolves and removes hairsystem from scalp, suitable for all bonding adhesives, spray bottle, mild on skin
Sponge for application of Track-Safe	6 Stück	4097	Cosmetic sponge to apply Track-Safe thinly and evenly, disposable

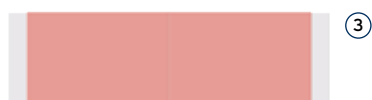


# → ATTACHMENT SYSTEMS / CARE PRODUCTS / ACCESSORIES

THE MANAGER TOP ACCESSORY RANGE



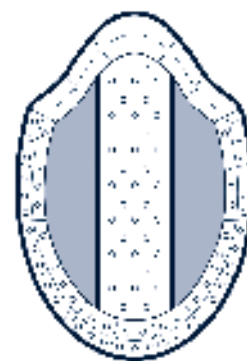
①



③



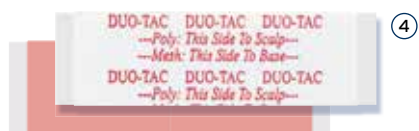
②



Bonding Tape



⑧



④



⑥



⑩



⑤



⑦



⑪

## WHITE LINER Adhesive Tape transparent / 3M quality

		Size	Art.No.	Description/Use
①	Strips 10mm	72 pcs. 10 x 52 mm	4064.10	<ul style="list-style-type: none"> <li>• Transparent double-sided adhesive tape</li> <li>• Medium adhesive strength</li> <li>• For daily use on PU</li> <li>• 3M quality</li> <li>• 3M Medical tape/ mild on skin</li> </ul>
	Strips 25mm	36 pcs. 25 x 75 mm	4064.25	
	Frontstrips	36 pcs. 25 x 75 mm	4063	
	Roll	12 mm x 3.5 m	4059	
		25 mm x 4.8 m	4060	
		25 mm x 20 m	4060.20	

## WHITE LINER Adhesive Tape with tissue / 3M quality

		Size	Art.No.	Description/Use
②	Points	50 pcs.	4055	<ul style="list-style-type: none"> <li>• Transparent double-sided adhesive tape with tissue</li> <li>• Stronger adhesive strength</li> <li>• For daily use on PU and lace</li> <li>• 3M quality</li> </ul>
		1,000 pcs.	4056	
	Roll	12 mm x 2.4 m	4061	
		25 mm x 5 m	4062	

## RED LINER Adhesive Tape transparent / strong adhesive strength without greasing

		Size	Art.No.	Description/Use
③	Strips	36 pcs. 25 x 75 mm	4050	<ul style="list-style-type: none"> <li>• Strong adhesive strip for lace, monofilament and Soft-Mono-Lace-Front</li> <li>• Also suitable for PU</li> <li>• Strong adhesive strength, lasts up to 3 days</li> <li>• Does not grease!</li> </ul>
	Frontstrips	36 pcs. 25 x 75 mm	4051	
	Roll	25 mm x 2.7 m	4051.R1	
		25 mm x 33 m	4051.R2	

## DUO-TAC-TAPE Adhesive Tape transparent / Combined RED and BLUE LINER

			Size	Art.No.	Description/Use
④	Strips	36 pcs.	25 x 75 mm	4054.S	• Very strong adhesive strength and easy removing of hairsystem • One side RED LINER, other side BLUE LINER • Adhesive tape for lace, net, mono and PU, lasts up to 2 weeks
⑤	Frontstrips	36 pcs.	25 x 75 mm	4054.A	

## BLUE LINER Adhesive Tape transparent / extra strong adhesive strength

			Size	Art.No.	Description/Use
⑥	Strips	36 pcs.	25 x 75 mm	4052	• Extra strong adhesive tape for permanent attachment from 3 to 4 weeks!
⑦	Frontstrips	36 pcs.	25 x 75 mm	4053	
	Roll		25 mm x 2.7 m	4053.R1	• Suitable for lace, Monofilament and Soft-Mono-Lace-Front • Matt surface for dull finish
			25 mm x 33 m	4053.R2	






## BONDING TAPE Adhesive Tape transparent with holes / extra strong adhesive strength

			Size	Art.No.	Description/Use
⑧	Strips	10 pcs.	3.8 x 30.5 cm	4068.10	• Extra strong adhesive tape for permanent attachment from 3 to 6 weeks!  • Best hold if scalp is oil and fat free • Before attachment clean skin with “Blue Peeling Gel” and “Blue Deep Cleaning Shampoo”
		90 pcs.	3.8 x 30.5 cm	4068.box	
⑨	Mini-Strips	36 pcs.	2 x 4 cm	4068.mini	

## ULTRA TAPE Adhesive Tape transparent / extra strong adhesive strength / matt surface

		Size	Art.No.	Description/Use	
⑩	Strips	36 pcs.	25 x 75 mm	5046.S	<ul style="list-style-type: none"><li>• Extra strong adhesive tape for permanent attachment from 3 to 6 weeks!</li><li>• Best hold if scalp is oil and fat free</li><li>• Very thin/flexible + antireflection (very matt) surface, perfect for thin lace-fronts</li></ul>
	Mini-Strips	72 pcs.	2 x 4 cm	5046.mini	
⑪	Frontstrips	36 pcs.	25 x 75 mm	5046.A	
	Roll		25 mm x 2,7 m	5046.R1	
				25 mm x 33 m	

## CLIPS, MASTIX AND ADHESIVE TAPE FOR REINFORCEMENT

	Size	Art.No.	Description/Use
Miniclip 23 mm	brown	4026.B	
	silver	4026.S	
	beige	4026.beige	
Clip 26 mm, with rubber tube	brown	4018.B	
	silver	4018.S	
	beige	4018.beige	
Clip 28 mm, with rubber tube	brown	4021.B	
	silver	4021.S	
	beige	4021.beige	
Clip 32 mm, with rubber tube	brown	4020.B	
	silver	4020.S	
	beige	4020.beige	
Clip 36 mm, with rubber tube	brown	4019.B	
	silver	4019.S	
	beige	4019.beige	
Mastix	30 ml	4065	Liquid adhesive for PU
Mastix Permanent	50 ml	4066	Liquid adhesive for PU, stronger than Mastix
Mastix Remover	50 ml	4067	To resolve and remove Mastix
Adhesive tape for reinforcement / 3M	25 mm x 9 m	4057	One-sided adhesive tape for gentle treatment of surface

# → ATTACHMENT SYSTEMS / CARE PRODUCTS / ACCESSORIES

THE MANAGER TOP ACCESSORY RANGE



## COLOURS AND SAMPLES

	Size	Art.No.	Description/Use
Manager Top Colour Ring			
① Synthetic	43 colours	4078	
Human Hair (Secret Hair®)	45 colours	4078.SH	
Hair Volume Samples (Density Guide)	7 samples	4081	60 %, 80 %, 100 %, 115 %, 130 %, 150 %, 180 %
Cap-Sample-Ring	28 caps	408601	Small sample caps for style choice of toupees and integrations, ideal for custom made orders

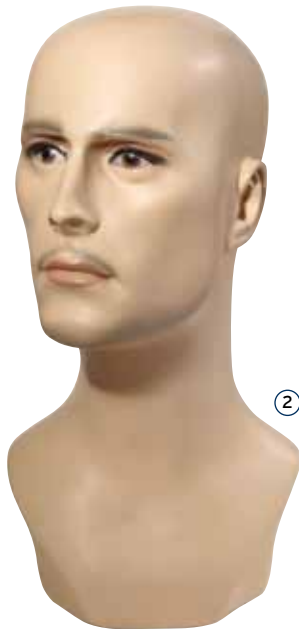
## CAST

	Size	Art.No.	Description/Use
Foil for toupee pattern, soft	5 pcs.	4092	Soft foil for toupee pattern which is base for cast, for stabilisation a Scotch-895 adhesive tape must be stuck onto pattern
Scotch-895: Adhesive for stabilising pattern	19 mm x 50 m	4094	One-sided stable adhesive tape, stabilises soft toupee pattern
Water-Cast Professional cast for pattern (plastic)	20 x 15 cm 30 x 20 cm	4092.WC20 4092.WC30	Low-Temperature-Plastic, softens in a water bath having a temperature of 75-80° C, after short cooling time down to approx. 40° C the plastic is elastic and mouldable and can be moulded direct on the customer's scalp

## CAPS AND REPAIR-MATERIAL

	Size	Art.No.	Description/Use
PU foil thin (G6)	approx. 30 x 60 cm	4093.PUNS	PU foil for repairs and additional adhesive surfaces
PU foil standard (G12)	approx. 30 x 60 cm	4093.PU	
PU foil with silicone (extra grip PU)	approx. 20 x 30 cm	4093.SPU	PU with silicone adheres on scalp
Monofilament	approx. 30 x 60 cm	4093.M	Monofilament as in MT 400
Welded-Mono	approx. 30 x 60 cm	4093.MM	Welded-Mono as in MT 3000
PU glue	25 ml	4090	Adhesive for attachment of PU on Mono for repairs and additional adhesive surfaces
Toupee caps			Various caps on request
Wig caps			Various caps on request





## STORAGE

	Size	Art.No.	Description/Use
② Head plastic (men)	55 cm head size	4007	
③ Wig stand		4046	Wig stand for storage and for drying
④ Styrofoam head	53 cm head size	4011	
⑤ Half-bowl made of Styrofoam		4014	
⑥ Suction holder (plastic)		4087	For attachment of Styrofoam head
⑦ Holder (wood)		4084	respectively half-bowl of Styrofoam at table

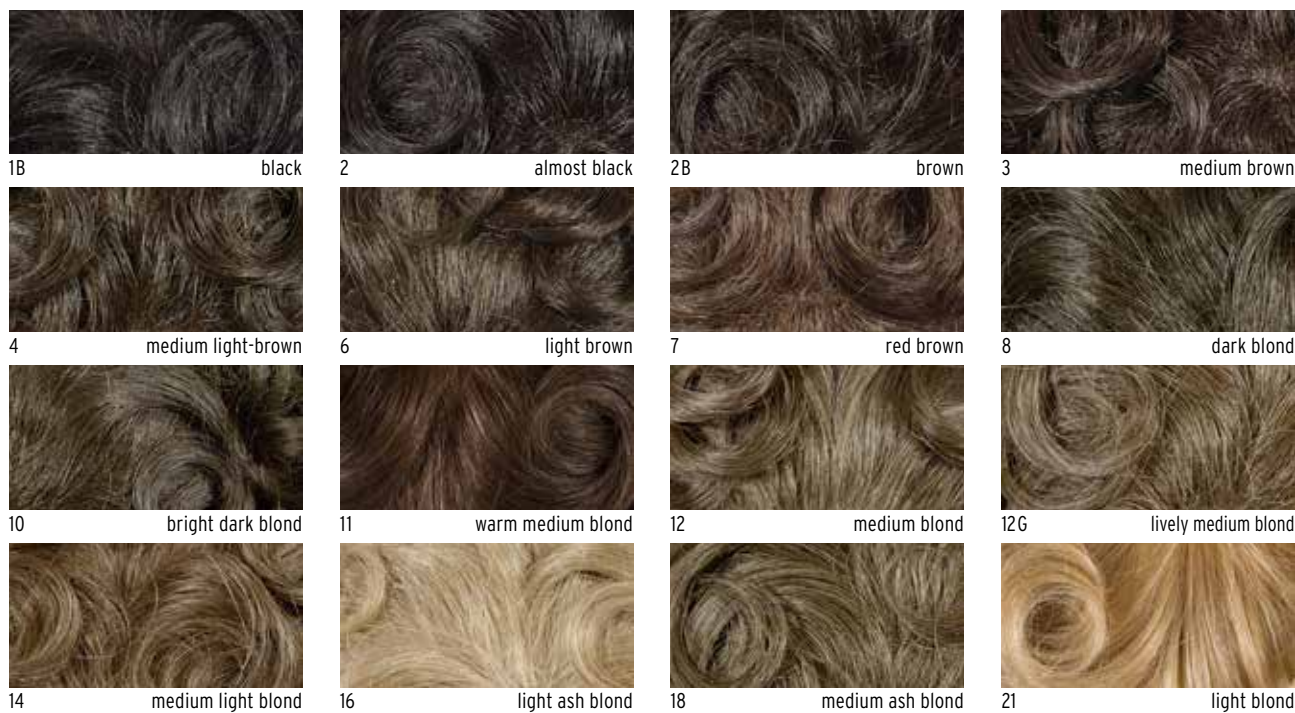
## STYLING HEADS

Size	Art.No.	Description/Use
Postiche head	401250 - 401260	Styling head with cork-shred-filling, sizes for 50 to 60 cm head size, hand-stuffed quality
Postiche needles	4095	
Rack (steel) adjustable in height with wooden joint	4012.BS	Head-holder for Postiche head
Head-holder, stainless steel, adjustable in height with wooden joint	4012.TKH	
Head-holder, iron bolt with wooden joint	4012.TKH-small	

## STEAM-FORMER / PINKING SCISSORS

Size	Art.No.	Description/Use
Steam-former, hand steamer	4077	For recast (forming) of synthetic hair with steam
Steam-former, Jiffy J-2W	4077.Jiffy	Standing device steam-former for recast of synthetic hair
Pinking scissors	4074	Pinking scissors for cutting of lace-fronts





## NEW COLOUR SYSTEM!

Grey colours: Base colour plus white hair (%).

### Examples:

2B/10 = Base colour 2B plus 10% white hair

2B/40 = Base colour 2B plus 40% white hair

11/75 = Base colour 11 plus 75% white hair

old colour system	new colour system
34	10/40 or 10/20
35	11/30
36	12/50
37	4/20
37A	4/40
39	10/20 or 11/30
40	4/20 or 10/20
40A	4/40 or 10/40
41	2B/10
41A	2B/40
41B	2B/20
42	14/40
42A	14/60
42B	14/20
43	12/25
45	10/60
47	4/60
54	11/75
56	4/90

Hair colours may slightly differ from image.





# manager<sup>top</sup><sup>®</sup>

Hair | Systems

